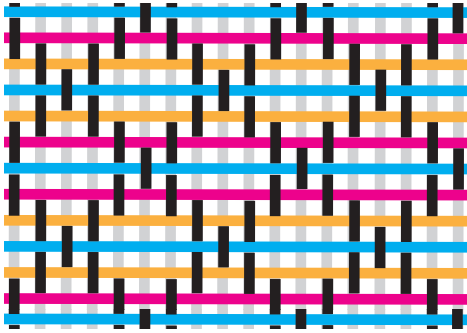
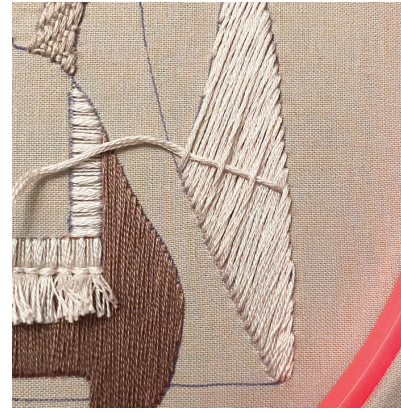


WEAVE 3 - 3033



Row 1: *O5 U1*
Row 2: U1 *O3 U1 O1 U1*
Row 3: O1 *U1 O1 U1 O3*
Row 4: O2 U1 *O5 U1*
Row 5: O1 *U1 O1 U1 O3*
Row 6: U1 *O3 U1 O1 U1*
Row 7: *O5 U1*
Row 8: U1 *O3 U1 O1 U1*
Row 9: O1 *U1 O1 U1 O3*
Row 10: O2 U1 *O5 U1*
Row 11: O1 *U1 O1 U1 O3*
Row 12: U1 *O3 U1 O1 U1*
Row 13: *O5 U1*



Weave 3 is the most complicated of the weaves. If you are worried about making this weave, feel free to change it out for one of the other weaves. Weave 1 will make your hoop feel most balanced. Weave 3 is made out of 3 patterns. Each pattern is color coded above to help you see where it goes and how the pattern works as a whole. This pattern repeats every 6 lines, meaning lines 1, 7 & 13 are the same. Like the previous two patterns, it is easiest to start along the guide line along the inside of the robe (like the thread in the picture but going the OTHER direction). Stitch the right half of the robe before stitching the left. As you add and loose rows on your starting side, be sure to adjust your starting point in the pattern. One way to do this is by picking a point in the middle of the diagram above like a blue O5 section. Find that same point in the middle of your stitches. Count down to the row you need to make, then over to the edge. Do the same on the diagram to know where to start. A good rule of thumb on this pattern is to remember that you will only ever go UNDER 1 thread at a time.