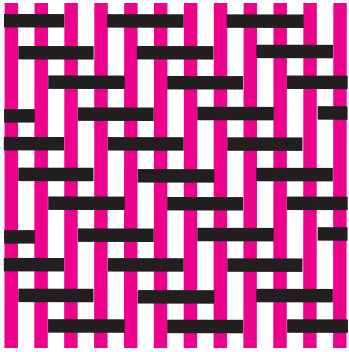
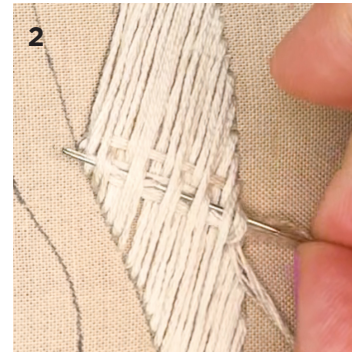
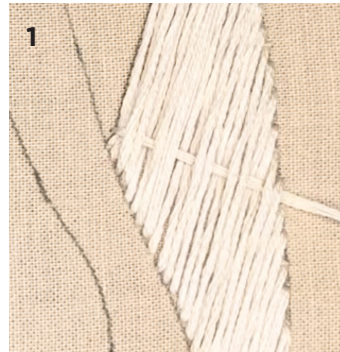


WEAVE 3 - 3033



Row 1: *O2 U2*
Row 2: U1 *O2 U2*
Row 3: U2 *O2 U2*
Row 4: O1 U2 *O2 U2*
Row 5: *O2 U2*
Row 6: U1 *O2 U2*
Row 7: U2 *O2 U2*
Row 8: O1 U2 *O2 U2*
Row 9: *O2 U2*



For weave 3, work the right side of the robe first, then move onto the left. This will make stitching along the “overlapping” line where the two sides meet, easier. Like weave 1, weave 3 is made with the basic pattern of O2 U2. The difference is that you will be working in rows instead of pairs. This means that you changing the pattern every row like we did with weave 2. As you move down the pattern, each new row of stitches moves over one thread to the right. As you move up the pattern each new set of stitches moves one thread to the left. This pattern repeats vertically every 4 rows, meaning rows 1, 5 & 9 are the same.

Working for the inside of the robe to the outside, make your first woven stitch by going OVER 2 stitches and then UNDER 2 stitches. Continue going O2, then U2 until you reach the other side. Make sure your thread is perpendicular to your foundation stitches before anchoring your stitch (picture 1). Your next stitch will start on the right side and follow the next row’s instructions (picture 2). Follow the pattern diagram above for each new row moving up or down the pattern. Be sure to adjust for any new threads added on either side of your weave. If you get confused by this, pick a section of the pattern where you know what is suppose to happen. For example, this could be figuring out where the O2 should happen, then count the pattern back out to the edge so you know what to start with.